

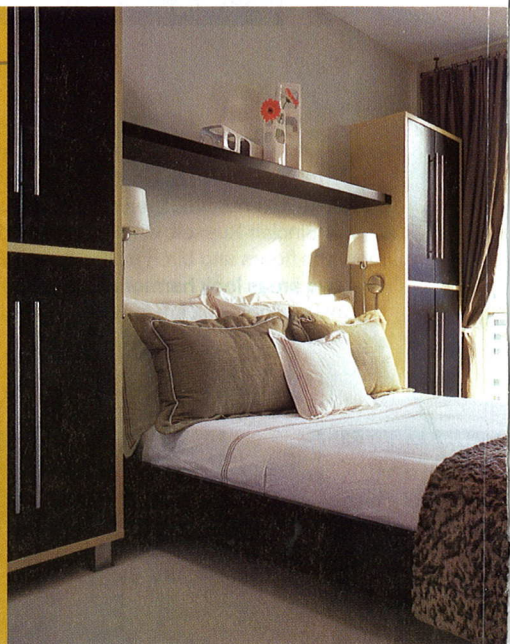
10

"There's no fireplace in this den, so the homeowner wanted this unit to resemble a mantel," explains intern interior designer Judy Petersiel. Games are stored in the cupboards, and pocket doors can be closed over the television screen when guests visit. Charcoal-grey paint, along with cutout bracket feet, lends the built-in English-country flair. The moulding at the top of the unit matches the room's crown moulding for a seamless, harmonious effect. Design by Judy Petersiel, Petersiel Steele Design; artwork by Scott Steele, Brush Gallery.



11

In this sleek bedroom, ready-made open shelves are dressed up with custom-made doors and chic hardware. "Now they incorporate a ton of hidden storage," says designer Robyn Clarke. She had the open shelf made and stained to match the bed. In lieu of night tables with lamps, she installed sconces directly onto the cabinets. Interior design, Robyn Clarke Interiors.



12

FAR LEFT: Even a narrow space can house a lot: 6"-deep bookshelves display books and accessories in this study. Intern interior designer Judy Petersiel saw the bulkhead, part of a new renovation, as an opportunity and notes: "Lighting in the bulkhead makes it easier to find books."

LEFT: Open shelving and a cherrywood desktop make this work area efficient but not too utilitarian. Task lighting is installed above the desk, which runs the length of the wall to maximize storage. Computer equipment is hidden where possible: the keyboard and office supplies are tucked in drawers, while a printer and files are housed in bottom cupboards. Design by Petersiel Steele Design; pillow, Onigo Imports; desk accessories, HomeSense.

